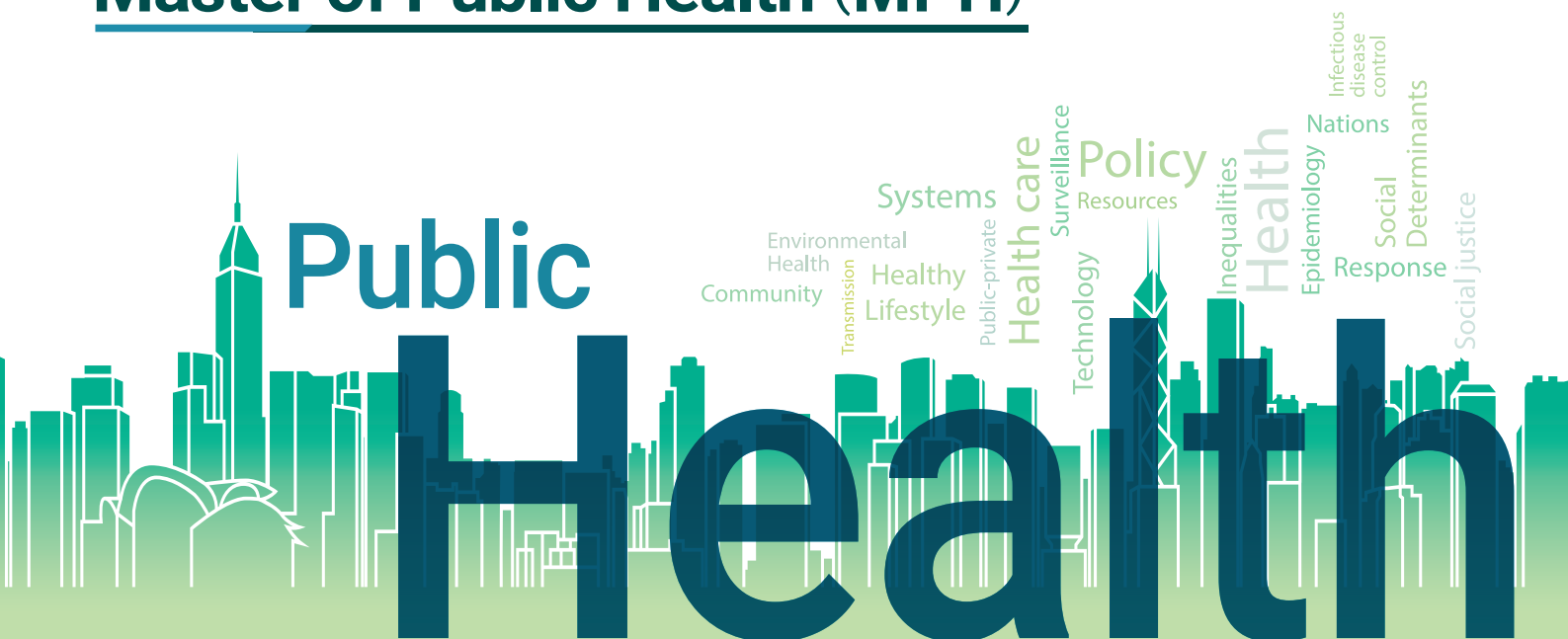




# Master of Public Health (MPH)



The **Master of Public Health (MPH)** programme prepares students from diverse backgrounds and experience with the knowledge and competencies for the **effective practice of public health** and to **become the next generation of public health leaders** in order that public health issues and priorities are better understood, accepted and acted upon in Hong Kong, Asia and globally.

## Modes of Study

- 1-year Full-time
- 2-year Part-time

## Concentrations

- Public Health Practice
- Epidemiology and Biostatistics
- Control of Infectious Diseases
- Health Economics, Policy and Management

Effective February 3<sup>rd</sup>, 2018, HKU School of Public Health's MPH programme is an applicant for accreditation by the Council on Education for Public Health (CEPH). The accreditation review will address the MPH programme. Other degrees and areas of study offered by this institution will not be included in the unit of accreditation review. For more information on the accrediting process, please visit CEPH's website at <http://ceph.org/>

## Enquiry

All enquiries should be directed to the MPH Office of the School of Public Health.

☎ (+852) 3917 9140

☎ (+852) 2855 9528

✉ [mphsph@hku.hk](mailto:mphsph@hku.hk)

🌐 [mph.sph.hku.hk](http://mph.sph.hku.hk)

📍 G/F, Patrick Manson Building (North Wing), 7 Sassoon Road, Pokfulam, Hong Kong

📘 HKU Public Health



# QUOTABLE QUALIFICATION

The Medical Council of Hong Kong recognises the Master of Public Health, MPH(HK) as a **quotable qualification**.

The Hong Kong Academy of Medicine accredits Continuing Medical Education (CME) / Continuing Professional Development (CPD) points for the degree programme.

# SCHOLARSHIPS

## Entrance Scholarship

2 full tuition scholarships for students from low-income or lower-middle income countries as defined by the World Bank.

## Honorary Teachers Scholarships

2 scholarships of HK\$50,000 each

## Professor Anthony J Hedley Scholarship

1 scholarship of HK\$10,000

# APPLICATION

For more details about the eligibility and procedures for application, please visit <https://mph.sph.hku.hk/>

*Non-local applicants are advised to apply as early as possible as the applications for admission and student visa will normally take at least 8 weeks.*

• <https://www.studentvisa.hku.hk/>

## Programme Structure

	Credit Weight
<b>Courses*</b>	
6 Core Courses	18
6 Concentration Courses	18
2 Elective Courses	6
<b>Total Course Credits</b>	<b>42</b>
<b>Practicum</b>	<b>12</b>
<b>Capstone</b>	<b>15</b>
<b>Total Credits</b>	<b>69</b>

\*Individual courses each carry 3 credits

## Core Course for All Students

- Introduction to biostatistics
- Introduction to epidemiology
- Principles of public health
- Health behaviour and communication
- Health leadership and management
- Health policy and politics

## Practicum

The practicum is a planned, supervised and evaluated public health practice experience with defined learning outcomes and deliverables.

Practicums may be carried out in one of the following local, regional, or international locations:

- Public health agency
- Public or private health care organization
- Non-governmental organization

## Capstone

Students will demonstrate the synthesis of skills and competencies acquired in the MPH programme in a written product specific to their concentration of study, under the guidance of an advisor.

## Provisional Course Fees

1-year Full-time: HK\$176,400 (US\$22,761)

2-year Part-time: HK\$88,200 (US\$11,381) per year  
(subject to adjustment)

